

MIMSAL

2024
MEDICAL DEVICES
CLASS I

MEDICAL LIGHTING

MIMSAL

MEDICAL LIGHTING

MIMSAL is a specialized lighting solutions supplier for the healthcare sector. We offer a wide range of luminaires designed to satisfy the diversity of the end-user needs and for each activity sector, by offering technical advice and commercial support to the professionals and prescribers of the healthcare sector.

Our products are engineered for easy mounting, with modern electronic components and light sources for the best energy efficiency and economy.

Our products and solutions are manufactured and certified in accordance with the Regulation (EU) 2017/745 of the European Parliament and of the Council on medical devices.

MIMSAL complies with the quality certification ISO 9001 and ISO 13485.



CONTENT

MEDICAL DEVICES - CLASS I

SURGERY LAMP	LAMP FOR EXAMINATION AND MINOR SURGERY PROCEDURES	MAGNIFIER LAMP	WOODS LAMP	X-RAY VIEWERS	ACCESSORIES
MIMLED Mimled 1000 Mimled 600	MS CEILING Ms Ceiling Ms Ceiling Plus MS LED MS LED MS LED Plus MS FLEX MS Flex MS Flex Plus LUXIFLEX LED II Luxiflex LED II Luxiflex LED Plus II LUXIFLEX SENSOR II Luxiflex Sensor II Luxiflex Sensor Plus II LUXIFLEX HAL	LUPA LED HF LUPA HF	VISTA LED Vista LED Handle Vista LED Plus VISTA HF Vista Handle HF Vista Plus HF	X-RAY VIEWERS AF LED AF 400 LED AF 300 LED AF 200 d/c LED	WALL B SUPPORT AH TABLE CLAMP RAIL PLUS BRACKET TROLLEY STAND EXTENSION ARM

MIMSAL

MIMLED 1000 MIMLED 600

Compact LED **Surgery lamp.**

Versions

MIMLED 1000
100.000 lux at 1 meter

MIMLED 600
60.000 lux at 1 meter



Homogeneous illumination

Each LED module illuminates the surgical field independently. The result is a shadow-free and homogenous light field over a large depth of illumination even when operating directly under the luminaire.

Light control with endo mode

While most compact medical luminaires cannot be operated at reduced brightness, the MIMLED offers a wide range of brightness options down to only 10.000 lux.

Color rendition / Temperature

The lights provide a high color rendering index (CRI) of over 95 for optimal tissue contrast. Especially red color tones are reproduced with the highest fidelity ($R9 > 90$) and enhance the visualization of the surgical field. The MIMLED have a fixed color temperature of 4.000 K.

Design & handling

The compact and rounded shape of the luminaire reduces drag in OR with laminar flow systems and keeps the operating field sterile. Separate light controls for sterile and non-sterile users ensures intuitive and safe handling.

Turn on the light and control the brightness by simply turning the blue sterile handle.



MIMLED 1000

Technical Details

Illumination at 100 cm	10.000 to 100.000 lux in ten steps
Number of LEDs	15 LEDs
Useful life	≥ 50.000 hours
Total irradiance	390 W/m ²
Power consumption	33 W
Color temperature	4.000 °K
Light field diameter at 1 meter	210 mm
Light field diameter D _{50/10}	140 mm / 210 mm
Color rendering	≥ 95% R _a / ≥ 90% R _g
Power supply	100/240 V - 50/60 Hz



Adjustable light intensity integrated in the grip

MIMLED 600

Technical Details

Illumination at 100 cm	10.000 to 60.000 lux in six steps
Number of LEDs	15 LEDs
Useful life	≥ 50.000 hours
Total irradiance	220 W/m ²
Power consumption	24 W
Color temperature	4.000 °K
Light field diameter at 1 meter	210 mm
Light field diameter D _{50/10}	140 mm / 210 mm
Color rendering	≥ 95% R _a / ≥ 90% R _g
Power supply	100/240 V - 50/60 Hz

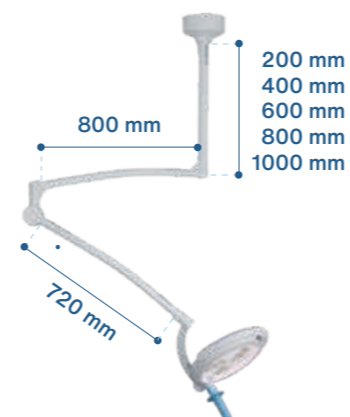
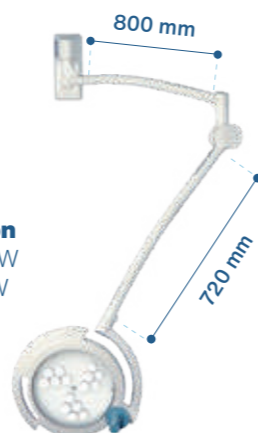


AVAILABLE IN 3 OPTIONS:

Trolley Stand, Wall version, Ceiling version (up to 3.40 meter height)



WALL version
REF. ML1000W
ML600W



CEILING version
(REF.) ML1000C 200
ML1000C 400
ML1000C 600
ML1000C 800
ML1000C 1000

ML600C 200
ML600C 400
ML600C 600
ML600C 800
ML600C1000

TROLLEY version
REF. ML1000FL
ML600FL



MIMSAL

MS CEILING MS CEILING PLUS

Minor surgery and advanced exploration luminaire designed to be ceiling mounted. The lamp incorporates a LED light source and a highly precise articulated arm that allows the luminaire to be adjusted in any position.

The quality of the materials used in its manufacture makes it especially suitable for **intensive use in surgery and examinations.**



Versions

MS CEILING
45.000 lux at 50 cm
On/Off version

MS CEILING PLUS
65.000 lux at 50 cm
Adjustable light intensity version

Exceptional quality of LED light

The powerful LED light source offers exceptional light quality and a lifespan of more than 50,000 hours.

The high performance of the color Ra 97% depicts the exceptional quality of white light for an excellent distinction of fabrics, reproducing all visible colors, naturally and precisely.

Ergonomic design

The circular shape of the head and its handle in the lower part facilitate its exact positioning, fulfilling the ergonomic requirements for any use.

Designed with clean and soft shapes which facilitate hygiene and cleanliness in medical environments.

Ceiling Support

The ceiling support is included. It is manufactured specifically for the MS CEILING family lamp.

The MS CEILING family lamp is not compatible with any other accessory.

It is designed to be installed in ceilings up to 3 meters.



MS CEILING Version



MS CEILING

Technical Details	(REF. M183500C)
Light source	LED 8W
Illumination at 50 cm	45.000 lux
Dimmable	NO
Color temperature	4.500 °K
Color rendering	> 97%
Useful life	50.000 hours
Articulated Arm Length	1.050 mm
Ceiling support length	1.000 mm maximum
Color	White

MS CEILING PLUS Version



MS CEILING PLUS

Technical Details	(REF. M187001C)
Light source	LED 12W
Illumination at 50 cm	65.000 lux
Dimmable	YES
Color temperature	4.500 °K
Color rendering	> 97%
Useful life	50.000 hours
Articulated Arm Length	1.050 mm
Ceiling support length	1.000 mm maximum
Color	White



MIMSAL

MS LED MS LED PLUS

MS LED is a **minor surgery and advanced exploration luminaire**. The lamp is manufactured with a LED light source and it is mounted with a highly precise articulated arm. Its arm allows the luminaire to be adjusted in any position.

The quality of the materials used in its manufacture makes it especially suitable for **intensive use in surgery and examinations**.

MS LED Plus version.
Dimmable, adjustable
light intensity



Versions

MS LED
45.000 lux at 50 cm
On/Off Version

MS LED PLUS
65.000 lux at 50 cm
Adjustable light intensity version

Exceptional quality of LED light

The powerful LED light source offers exceptional light quality and a lifespan of more than 50,000 hours.

The high performance of the color Ra 97% depicts the exceptional quality of white light for an excellent distinction of fabrics reproducing, all visible colors, naturally and precisely.

Ergonomic design

The circular shape of the head and its handle in the lower part facilitate its exact positioning, fulfilling the ergonomic requirements for any use.

Designed with clean and soft shapes which facilitate hygiene and cleanliness in medical environments.

Mounting options

The standard version includes AH table clamp.

As for accessories, we offer a wide selection of supports such as wall supports, wall extension arms, trolley stands and rail brackets.



MS LED On/Off version



MS LED

Technical Details	(REF. M183500)
Light source	LED 8W
Illumination at 50 cm	45.000 lux
Dimmable	NO
Color temperature	4.500 °K
Color rendering	> 97%
Useful life	50.000 hours
Articulated arm length	900 mm
Color	White

ACCESSORIES



Wall B Support
REF. B0101800



Ah Table Clamp
REF. B010190

MS LED PLUS

Technical Details	(REF. M187001)
Light source	LED 12W
Illumination at 50 cm	65.000 lux
Dimmable	YES
Color temperature	4.500 °K
Color rendering	> 97%
Useful life	50.000 hours
Articulated arm length	900 mm
Color	White



Rail Plus Bracket
REF. 82026



Extension Arm
REF. B0101S0

Trolley Stand
8,8 kg REF. 09651

MIMSAL

MS FLEX MS FLEX PLUS

MS FLEX is a **minor surgery and advanced exploration luminaire**. The lamp is manufactured with a LED light source and it is mounted with a highly precise flexible arm. Its arm allows the luminaire to be adjusted in any position.

The quality of the materials used in its manufacture makes it especially suitable for **intensive use in surgery and examinations**.

MS Flex Plus version.
Dimmable, adjustable
light intensity



Versions

MS FLEX
45.000 lux at 50 cm
On/Off Version

MS FLEX PLUS
65.000 lux at 50 cm
Adjustable light intensity version

Exceptional quality of LED light

The powerful LED light source offers exceptional light quality and a lifespan of more than 50,000 hours.

The high performance of the color Ra 97% depicts the exceptional quality of white light for an excellent distinction of fabrics, reproducing all visible colors, naturally and precisely.

Ergonomic design

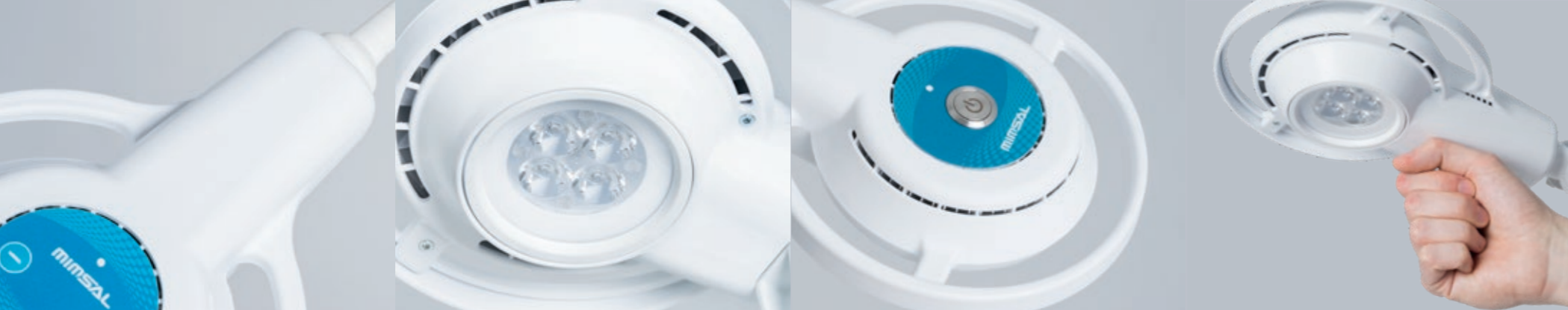
The circular shape of the head and its handle in the lower part facilitate its exact positioning, fulfilling the ergonomic requirements for any use.

Designed with clean and soft shapes which facilitate hygiene and cleanliness in medical environments.

Mounting options

The standard version includes AH table clamp.

As for accessories, we offer a wide selection of supports such as wall supports, wall extension arms, trolley stands and rail brackets.



MS Flex On/Off version



MS FLEX

Technical Details	(REF. M183500FL)
Light source	LED 8W
Illumination at 50 cm	45.000 lux
Dimmable	NO
Color temperature	4.500 °K
Color rendering	> 97%
Useful life	50.000 hours
Flexible Arm Length	700 mm
Color	White

MS FLEX PLUS

Technical Details	(REF. M187001FL)
Light source	LED 12W
Illumination at 50 cm	65.000 lux
Dimmable	YES
Color temperature	4.500 °K
Color rendering	> 97%
Useful life	50.000 hours
Flexible Arm Length	700 mm
Color	White

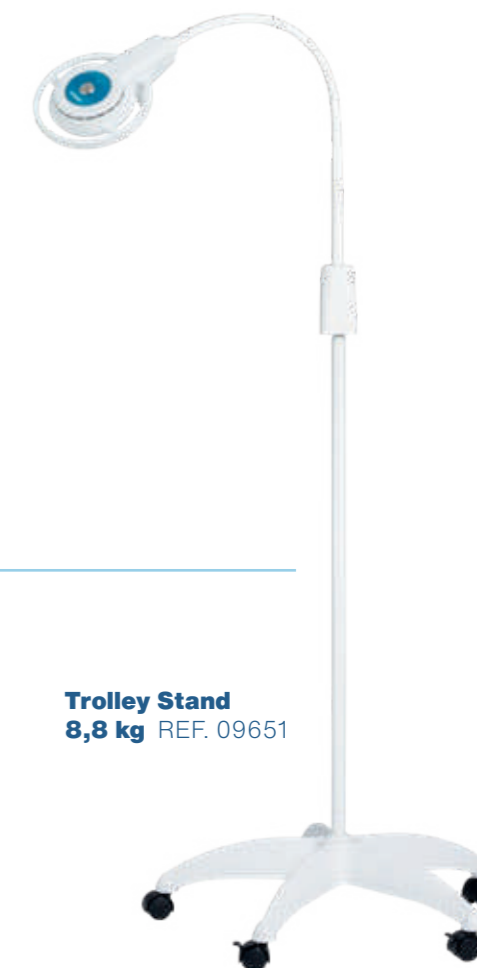
MS Flex Plus version



ACCESSORIES



Trolley Stand
8,8 kg REF. 09651



MIMSAL

LUXIFLEX LED II LUXIFLEX LED PLUS II

Examination and advanced exploration luminaire.

Versions

Luxiflex LED II
25.000 lux at 50 cm

Luxiflex LED Plus II
50.000 lux at 50 cm

Luxiflex LED PLUS II



High efficiency

The powerful LED light source offers exceptional light quality and a lifespan of more than 50,000 hours.

The Plus II version has a high performance of the color Ra 97% that depicts the exceptional quality of white light for an excellent distinction of fabrics, reproducing all visible colors, naturally and precisely.

Flexibility

Flexible, height-adjustable and highly precise arm that allows the luminaire to be adjusted to any position.

Design & handling

Designed with clean and soft shapes which facilitate hygiene and cleanliness in medical environments.

Its compact head and the switch located at the base of the lamp make this model an ideal luminaire for the most demanding examinations procedures.

Mounting options

The standard version includes AH table clamp.

As for accessories, we offer a wide selection of supports such as wall supports, wall extension arms, trolley stands and rail brackets.



Luxiflex LED II

LUXIFLEX LED II

Technical Details	(REF. LX2370)
Light source	LED 8W
Number of LEDs	3
Useful life	50.000 hours
Illumination at 50 cm	25.000 lux
Color temperature	4.000 °K
Color rendering	> 80%
Total length	935 mm
Color	White

ACCESSORIES



Wall B support
REF. B0101800



AH Table clamp
REF. B010190



Rail plus bracket
REF. 82026



Extension arm
REF. B0101S0

LUXIFLEX LED PLUS II

Technical Details	(REF. LX2370P)
Light source	LED 12W
Number of LEDs	4
Useful life	50.000 hours
Illumination at 50 cm	50.000 lux
Color temperature	4.500 °K
Color rendering	>97%
Total length	935 mm
Color	White



Trolley stand
4 kg REF. 09655
8,8 kg REF. 09651

MIMSAL

LUXIFLEX SENSOR II LUXIFLEX SENSOR PLUS II

Examination and **advanced exploration luminaire.**

Versions

Luxiflex SENSOR II
25.000 lux at 50 cm

Luxiflex sensor Plus II
50.000 lux at 50 cm

Luxiflex SENSOR II



High efficiency

The powerful LED light source offers exceptional light quality and a lifespan of more than 50,000 hours.

The Plus II version has a high performance of the color Ra 97% that depicts the exceptional quality of white light for an excellent distinction of fabrics, reproducing all visible colors, naturally and precisely.

Contactless switch

Allows to switch the lamp on and off without contact. Adjustable light intensity (100% - 50% - 0%).

Flexibility

Flexible, height-adjustable and highly precise arm that allows the luminaire to be adjusted to any position.

Design & handling

Designed with clean and soft shapes which facilitate hygiene and cleanliness in medical environments.

Its compact head and the switch located at the base of the lamp make this model an ideal luminaire for the most demanding examinations procedures.

Mounting options

The standard version includes AH table clamp.

As for accessories, we offer a wide selection of supports such as wall supports, wall extension arms, trolley stands and rail brackets.

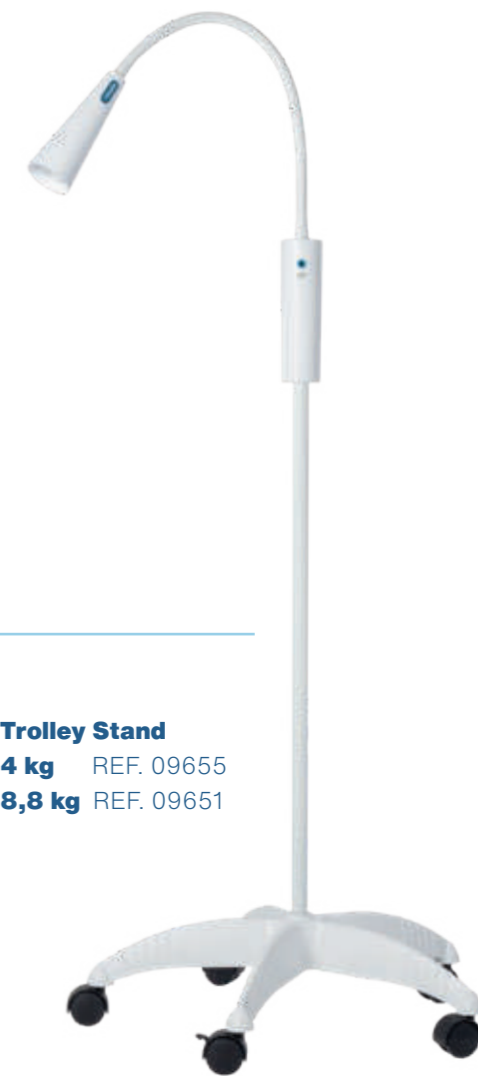


LUXIFLEX SENSOR II

Technical Details	(REF. LX2324S)
Light source	LED 8W
Number of LEDs	3
Useful life	50.000 hours
Illumination at 50 cm	25.000 lux
Color temperature	4.000 °K
Color rendering	>80%
Total length	935 mm
Color	White
Dimmable	YES

LUXIFLEX SENSOR PLUS II

Technical Details	(REF. LX2324SP)
Light source	LED 12W
Number of LEDs	4
Useful life	50.000 hours
Illumination at 50 cm	50.000 lux
Color temperature	4.500 °K
Color rendering	>97%
Total length	935 mm
Color	White
Dimmable	YES



ACCESSORIES



Wall B Support
REF. B0101800



Ah Table Clamp
REF. B010190



Rail Plus Bracket
REF. 82026



Extension Arm
REF. B0101S0

Trolley Stand
4 kg REF. 09655
8,8 kg REF. 09651

mimsal

LUXIFLEX HAL

Luxiflex HAL is a **versatile lamp** with a compact design. Luxiflex is conceived for medical examination procedures that require **great performance**.



Also available in LED version

Luxiflex LED II

Luxiflex LED Plus II

Flexibility

Flexible arm that allows to adjust its height, assuming a proper working distance.

Compact design

Luxiflex offers an easy use, thanks to its compact head with a diameter of 8 cm and its switch located at the base of the lamp. These features make this model an ideal luminaire for the most demanding examination procedures.

Mounting options

The standard version includes AH table clamp.

As for accessories, we offer a wide selection of supports such as wall supports, wall extension arms, trolley stands and rail brackets.



LUXIFLEX HAL

Technical Details	(REF. I0104AO)
Light source	Halogen 35W 36°
Useful life	5.000 hours
Illumination at 50 cm	35.000 lux
Color temperature	3.000 °K
Color rendering	100%
Total length	850 mm
Color	White
Protective Glass	YES

ACCESSORIES



Wall B Support
REF. B0101800



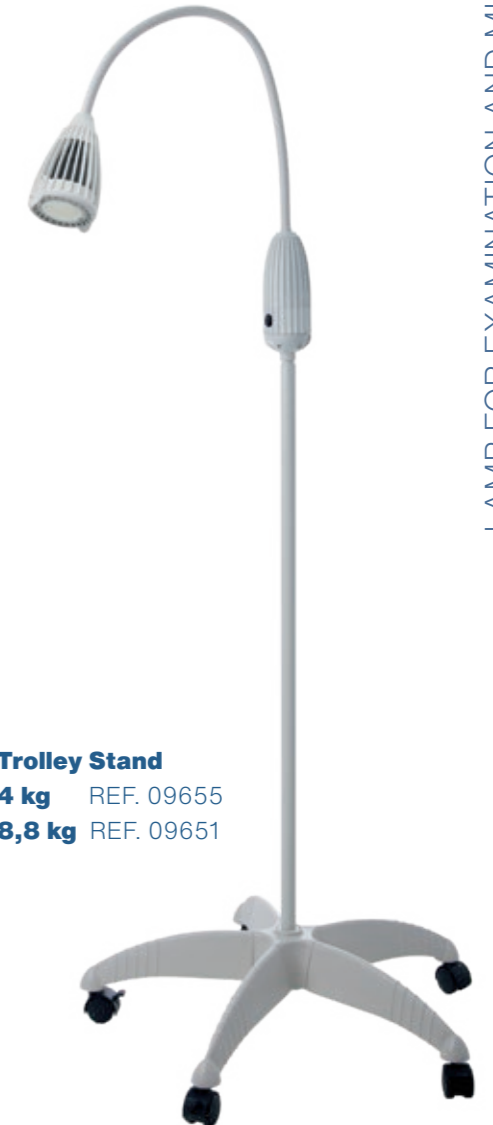
Rail Plus Bracket
REF. 82026



Ah Table Clamp
REF. B010190



Extension Arm
REF. B0101S0



Trolley Stand
4 kg REF. 09655
8,8 kg REF. 09651

MIMSAL

LUPA LED H.F

LED magnifier with **round lens**, Lupa LED H.F is **intended when performing any meticulous work in need of great accuracy**. It is ideal for hospitals, measurement studies, laboratories, aesthetic clinics, etc.



Functionality and performance

Generates a light without dark spots.

Internal spring balanced arms that allow different positions.

Switch on the head.

Round head with convex lens, adjustable and simple mechanism.

Cleaning and Safety

Head exempt of heat.

Protective cover on the head with hinge mechanism to prevent from dust and scratches that may damage the lens.

Economy

High performance, low power 8 W.

Long life, 40,000 hours.

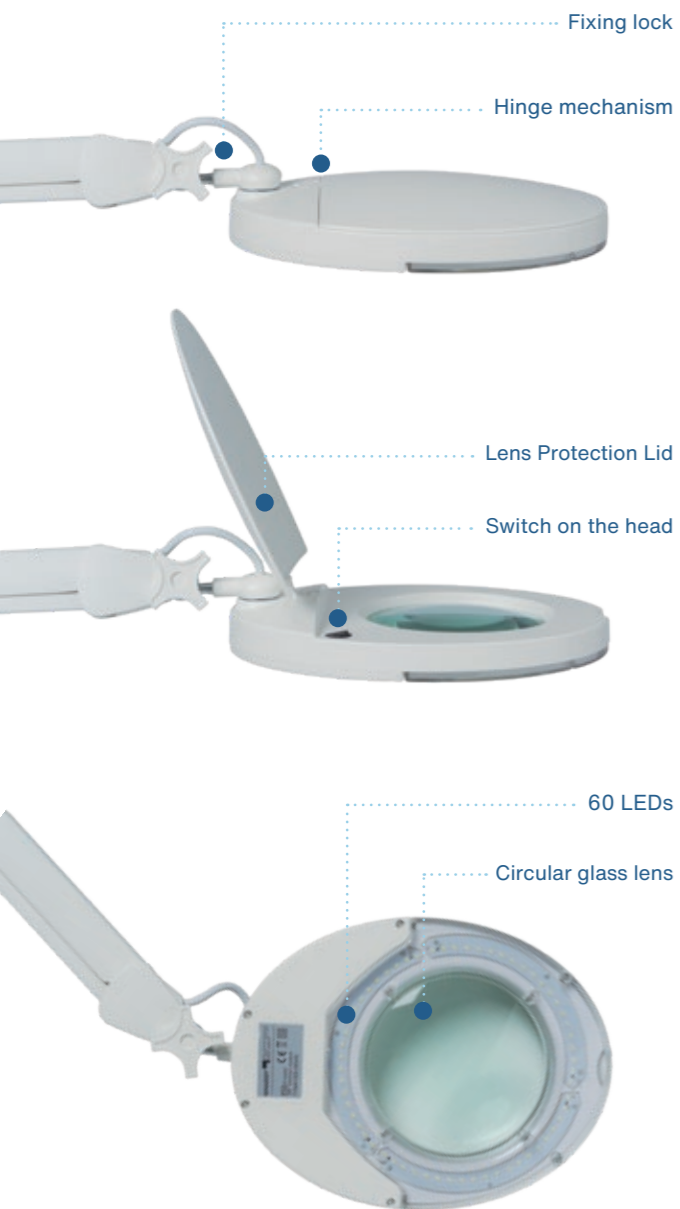
Durable materials.

Very low maintenance costs.

Mounting Options

The standard version includes AH table clamp.

As for accessories, we offer a wide selection of supports such as wall supports, wall extension arms, trolley stands and rail brackets.



LUPA LED H.F

Technical Details	(REF. 09340)
Light source	LED 8W
Useful life	40.000 hours
Color temperature	6.500 °K
Lenses	5 diopters
Magnification Lens Diameter	127 mm
Articulated Arm Length	900 mm
Lighting unit Net Weight	2,40 kg
Color	White

ACCESSORIES



Wall B Support
REF. B0101800



Ah Table Clamp
REF. B010190



Trolley Stand
8,8 kg REF. 09651



Rail plus bracket
REF. 82026



Extension Arm
REF. B0101S0

MIMSAL

LUPA H.F

Cold light luminaire with magnifying lens,
essential for high precision work.

An ideal use for hospitals, medical centers,
laboratories and aesthetic clinics.



Light Source

Low consumption 22W circular fluorescent tube.

Produces a light without dark spots and does not overheat.

Lifetime of 10.000 hours.

Functionality and performances

Adjustable height articulated arm that allows easy movement in different positions.

Head with biconvex circular lens of 5 diopeters, adjustable and simple mechanism.

Switch on the head of the luminaire.

Security and hygiene

Head with protective cover to prevent dust or scratches that may damage the lens.

Mounting Options

Standard version includes AH table clamp.

As for accessories, we offer a wide selection of supports such as wall supports, wall extension arms, trolley stands and rail brackets.



LUPA H.F

Technical Details	(REF. 09332)
Light source	FL 22W
Useful life	10.000 hours
Color temperature	6.500 °K
Lenses	5 diopters
Magnification Lens Diameter	125 mm
Articulated Arm Length	900 mm
Lighting unit Net Weight	2,56 Kg
Color	White

ACCESSORIES

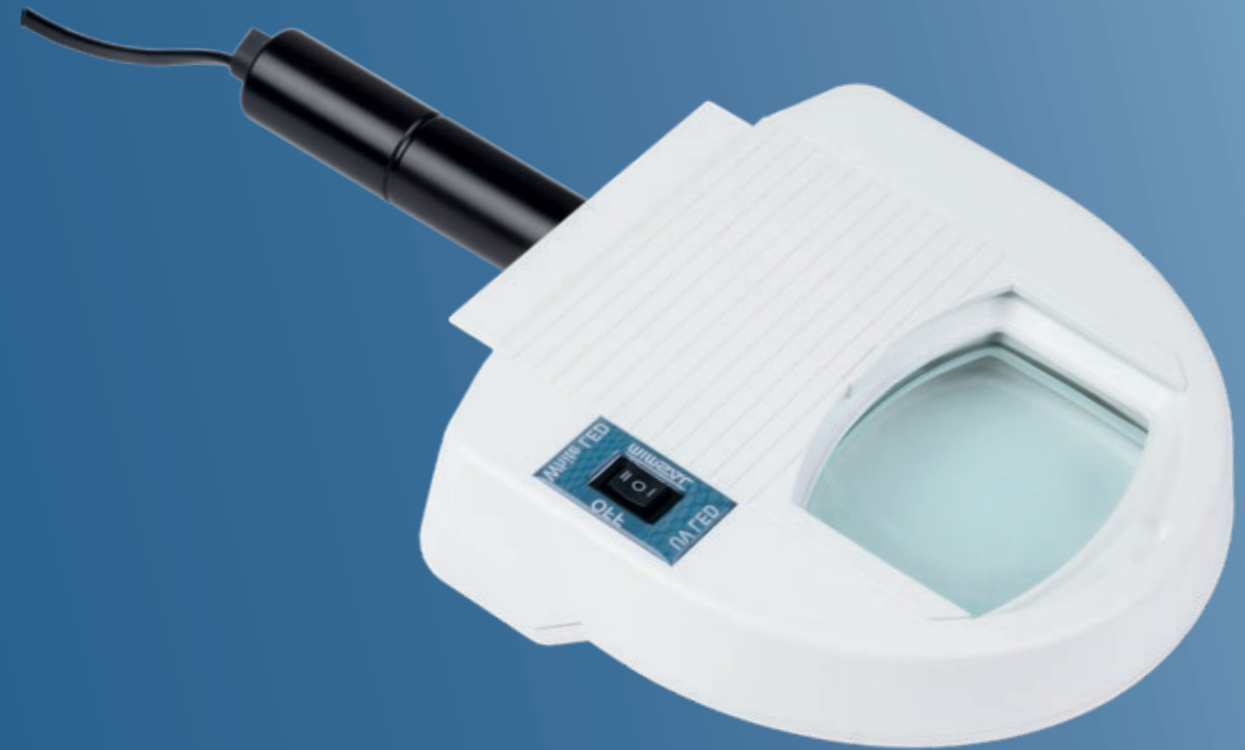


MIMSAL

VISTA LED HANDLE VISTA LED PLUS

Lamp with magnifying lens designed with LED technology to emit **two types of light: wood's light (UV) and daylight.** It is used specially in dermatology, aesthetics, veterinary medicine and research procedures.

Great ease of use thanks to the **switch** located on the head of the luminaire. The switch allows you to choose the type of light. **Protective sliding** cap that covers the lens. The magnifying lens are made of glass.



Versions

VISTA LED HANDLE

Hand version with white color head and black color handle.

VISTA LED PLUS

Articulated arm version.

LED White

LED UV



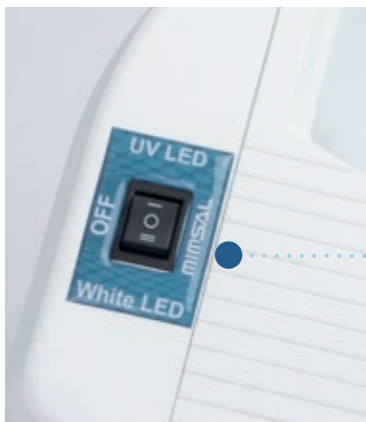
UV Light - UV LED



Daylight - White LED



Lens protection lid closed position



Light mode selection switch

VISTA LED HANDLE

Technical Details	(REF. E051L)
Light source	LED 3W
Lenses	3 diopters
Magnification Lens Dimensions	100mm x 60mm
Power supply	100/240 V - 50/60 Hz
Color	White
UV Light mode	
Number of LEDs	2
Wavelength UVA	365 nanometers
UV Type	UVA
Daylight mode	
Number of LEDs	2
Color temperature	4.500°K
Color rendering	>80%

VISTA LED PLUS

Technical Details	(REF. E051PL)
Light source	LED 3W
Lenses	3 diopters
Magnification Lens Dimensions	100mm x 60mm
Power supply	100/240 V - 50/60 Hz
Articulated Arm Length	900 mm
Color	White
UV Light mode	
Number of LEDs	2
Wavelength UVA	365 nanometers
UV Type	UVA
Daylight mode	
Number of LEDs	2
Color temperature	4.500°K
Color rendering	>80%



Trolley Stand
8,8 kg REF. 09651

ACCESSORIES

- Ah Table Clamp** (REF. B010190)
- Wall B Support** (REF. B0101800)
- Rail Plus Bracket** (REF. 82026)
- Extension Arm** (REF. B0101S0)

MIMSAL

VISTA UV HANDLE H.F

VISTA PLUS H.F

Lamp with **magnifying lens** designed to emit wood's **light (UV)**. It is used specially in **dermatology, aesthetics, veterinary medicine** and **research** procedures.

Great ease of use thanks to the **switch located on the head** of the luminaire. Protective sliding cap that covers the lens. The magnifying lens are made of glass.

Versions

VISTA UV HANDLE H.F

Hand version with white color head and black color handle.

VISTA PLUS H.F

Articulated arm version.



Compact UV fluorescent

Polished aluminum reflector



Front view and profile view



Lens protection lid closed position

VISTA UV HANDLE H.F

Technical Details	(REF. E051LAT212)
Light source	FL UV compact 9W
Wavelength UVA	360 nanometers
Lenses	3 diopters
Magnification Lens Dimensions	100mm x 60mm
Color	White



VISTA PLUS H.F

Technical Details	(REF. E051CAO012)
Light source	FL UV compact 9W
Light source (optional)	FL compact 9W 840
Lenses	3 diopters
Magnification Lens Dimensions	100mm x 60mm
Articulated Arm Length	900 mm
Color	White



Trolley Stand
8,8 kg REF. 09651

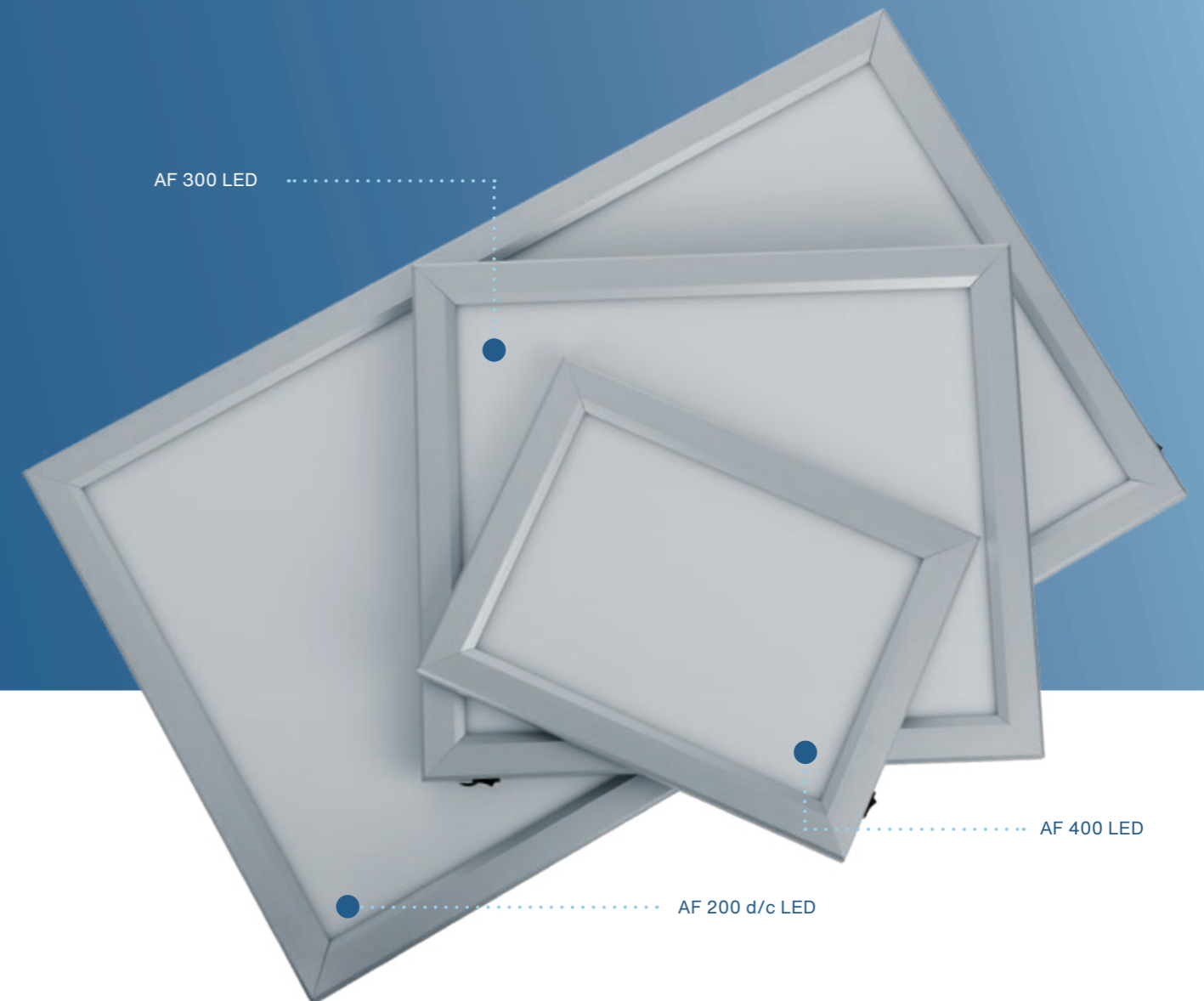
ACCESSORIES

- Ah Table Clamp** (REF. B010190)
- Wall B Support** (REF. B0101800)
- Rail Plus Bracket** (REF. 82026)
- Extension Arm** (REF. B0101S0)

X-RAY VIEWERS AF LED

Extraslim X-Ray Viewers series with a 25 millimeter thickness and made of **aluminum frame**. This format provides a LED light source for greater illuminance.

This format is characterized by its **low consumption** and the **low temperature** of its screen.



Available in three formats

AF 400 LED
Portable version with desktop stand (optional).

AF 300 LED
Wall version.

AF 200 d/c LED
Wall version.



Front view and extraslim profile view detail
AF 400 LED version



AF 400 LED

Technical Details	(REF. AF400LED)
Light source	LED 8 W
Luminous intensity	9950 cd/m ²
Color temperature	6000 °K
Useful life	50.000 hours
Illuminated surface	295 x 210 mm
Device External Dimensions	365 x 280 x 25 mm
Power supply	100/240 V - 50/60 Hz
Frame material	Aluminum
Recommended temperature	from 10 to 40 °C

AF 300 LED

Technical Details	(REF. AF300LED)
Light source	LED 14 W
Luminous intensity	6300 cd/m ²
Color temperature	6000 °K
Useful life	50.000 hours
Illuminated surface	350 x 420 mm
Device External Dimensions	420 x 490 x 25 mm
Power supply	100/240 V - 50/60 Hz
Frame material	Aluminum
Recommended temperature	from 10 to 40 °C

AF 200 d/c LED

Technical Details	(REF. AF200d/cLED)
Light source	LED 32 W
Luminous intensity	6700 cd/m ²
Color temperature	6000 °K
Useful life	50.000 hours
Illuminated surface	420 x 750 mm
Device External Dimensions	490 x 820 x 25 mm
Power supply	100/240 V - 50/60 Hz
Frame material	Aluminum
Recommended temperature	from 10 to 40 °C



Desktop stand
AF 400 LED
DESKTOP STAND
REF. AF-A

Accessory stainless steel desktop
stand for AF 400 LED



ACCESSORIES

WALL B SUPPORT

Wall support.
Shaft-wall separation: 7cm.

REF. B0101800



AH TABLE CLAMP

Table fixing.

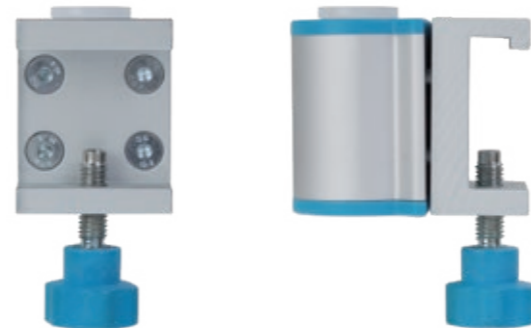
REF. B010190



RAIL PLUS BRACKET

To adapt to U.C.I rail.

REF. 82026



TROLLEY STAND

H=92 cm Ø 60 cm

4 kg REF. 09655
8,8 kg REF. 09651



EXTENSION ARM

It provides 40 cm rotation from the wall.

WALL B SUPPORT included.
REF. B0101S0



MIMSAL



MEDICAL LIGHTING

2024
NON-MEDICAL DEVICES

CONTENT

NON-MEDICAL DEVICES

LAMP FOR EXAMINATION AND MINOR SURGERY PROCEDURES

LS LED

INFRARED LAMP

LS INFRA
LS Infra
LS Infra Timer

ACCESSORIES

WALL B SUPPORT
AH TABLE CLAMP
RAIL PLUS BRACKET
TROLLEY STAND
EXTENSION ARM

mimsal

LS LED

LS LED is an **examination lamp**. The luminaire is mounted with a **highly precise articulated arm** and it is manufactured with a metal structure.

It is specially designed to be used in **examination procedures**.



Easy to use

Adjustable height articulated arm that allows easy adjustment in different positions, provides a long reach and maximum vertical and horizontal movement, and always remains in the correct position.

Switch located on the connection cable.

Simple and durable

Metallic structure, manufactured with durable materials and with very low maintenance costs.

Mounting Options

The standard version includes AH table clamp.

As for accessories, we offer a wide selection of supports such as wall supports, wall extension arms, trolley stands and rail brackets.

ACCESSORIES



LS LED

Technical Details	(REF. LS010316LED)
Light source	LED 7,5W
Head Diameter	210 mm
Base	E-27 ceramic
Articulated Arm Length	900 mm
Color	White



Wall B Support
REF. B0101800



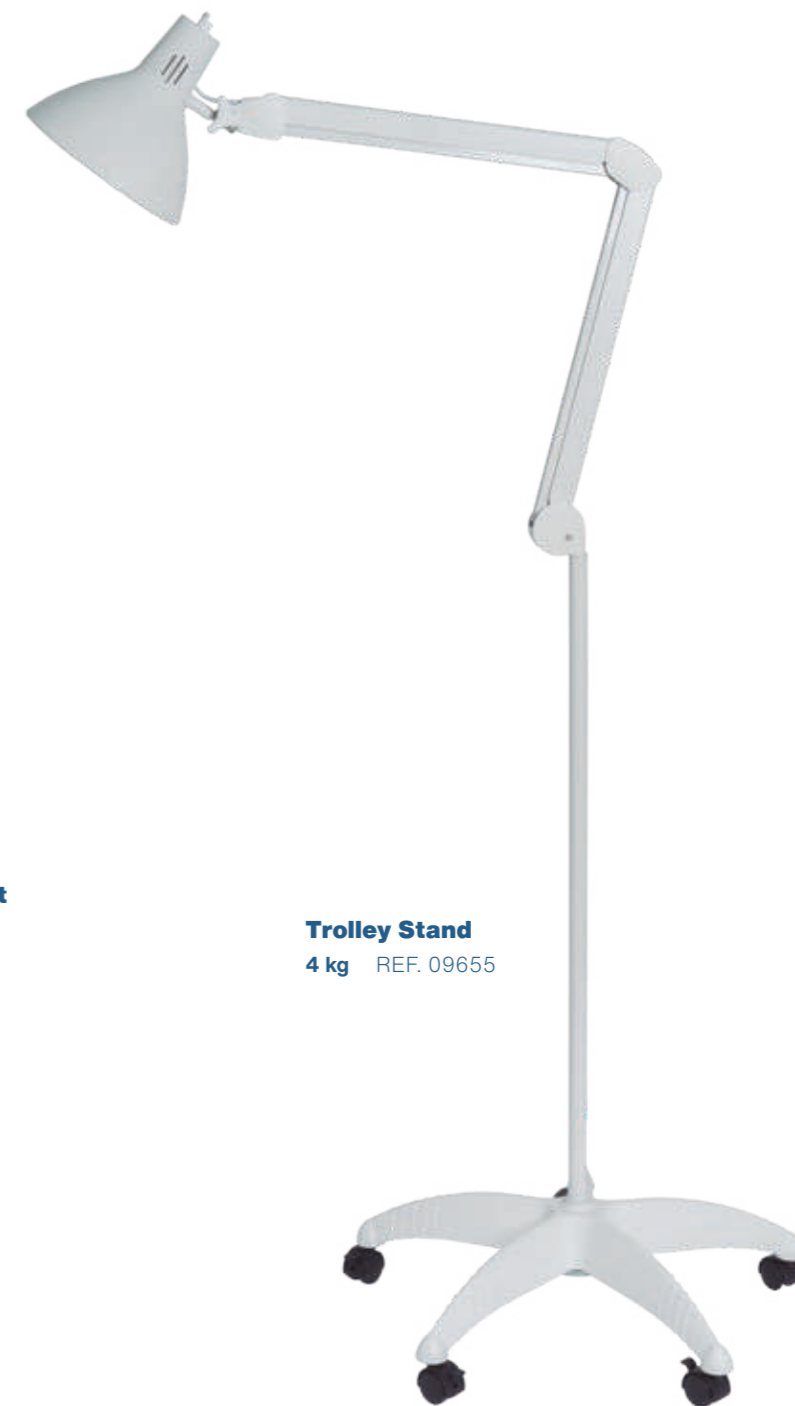
Ah Table Clamp
REF. B010190



Rail Plus Bracket
REF. 82026



Extension Arm
REF. B0101S0



Trolley Stand
4 kg REF. 09655

mimsal

LS INFRA LS INFRA TIMER

LS Infra is an **infrared lamp**.

The luminaire is mounted with a highly precise **articulated arm**. It is available in 150W or 250W bulb.



LS Infra versions

LS Infra 150.
(REF. E020412)

LS Infra 250
(REF. E02041250)

LS Infra Timer versions

LS Infra 150 Timer
(REF. E020412T)

LS Infra 250 Timer
(REF. E02041250T)

Easy to use

Adjustable height articulated arm that allows easy adjustment in different positions, provides a long reach and maximum vertical and horizontal movement, and always remains in the correct position.

Simple and durable

Metallic structure, manufactured with durable materials and with very low maintenance costs.

Mounting Options

The standard version includes AH table clamp.

As for accessories, we offer a wide selection of supports such as wall supports, wall extension arms, trolley stands and rail brackets.



LS INFRA

Technical Details	
Light source	IR E-27 150W
	IR E-27 250W
Head Diameter	210 mm
Base	E-27 ceramic
Articulated Arm Length	900 mm
Color	White

ACCESSORIES



Wall B Support
REF. B0101800



Ah Table Clamp
REF. B010190



Rail Plus Bracket
REF. 82026



Extension Arm
REF. B0101S0



Trolley Stand
4 kg REF. 09655

LS INFRA TIMER

Technical Details	
Light source	IR E-27 150W
	IR E-27 250W
Head Diameter	210 mm
Base	E-27 ceramic
Articulated Arm Length	900 mm
Color	White
Timer	0 -15 minutes



The LS Infra Timer version:
0 - 15 minutes timer integrated
on the connection cable.

ACCESSORIES

WALL B SUPPORT

Wall support.
Shaft-wall separation: 7cm.

REF. B0101800



AH TABLE CLAMP

Table fixing.

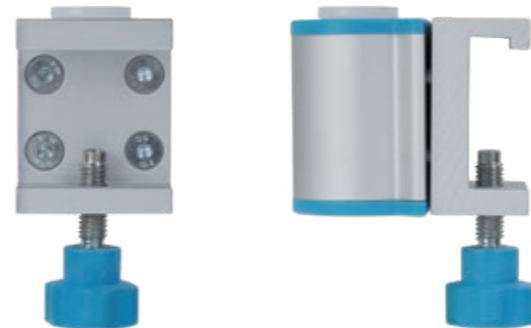
REF. B010190



RAIL PLUS BRACKET

To adapt to U.C.I rail.

REF. 82026



TROLLEY STAND

H=92 cm Ø 60 cm

4 kg REF. 09655
8,8 kg REF. 09651



EXTENSION ARM

It provides 40 cm rotation from the wall.

WALL B SUPPORT included.
REF. B0101S0





MIMSAL
MEDICAL LIGHTING

Phone 1800 622 734 | Fax +61 2 9692 7965 | sales@machealth.com.au | www.macquariemed.com.au | Specifications subject to change without notice.

FONDO EUROPEO DE DESARROLLO REGIONAL



UNA MANERA DE HACER EUROPA